



amer
— YACHTS —







amer 94
www.ameryachts.com











amer 94
www.ameryachts.com



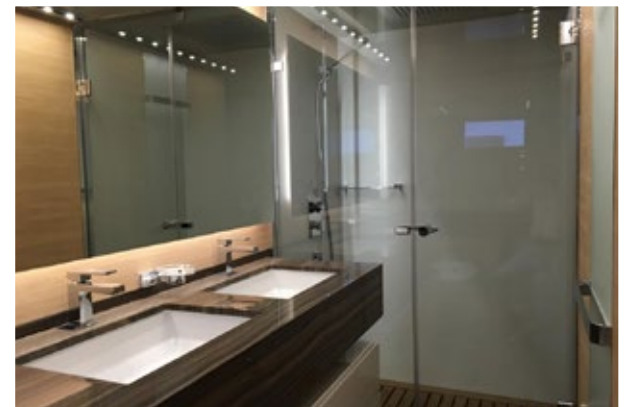
amer 94
www.ameryachts.com





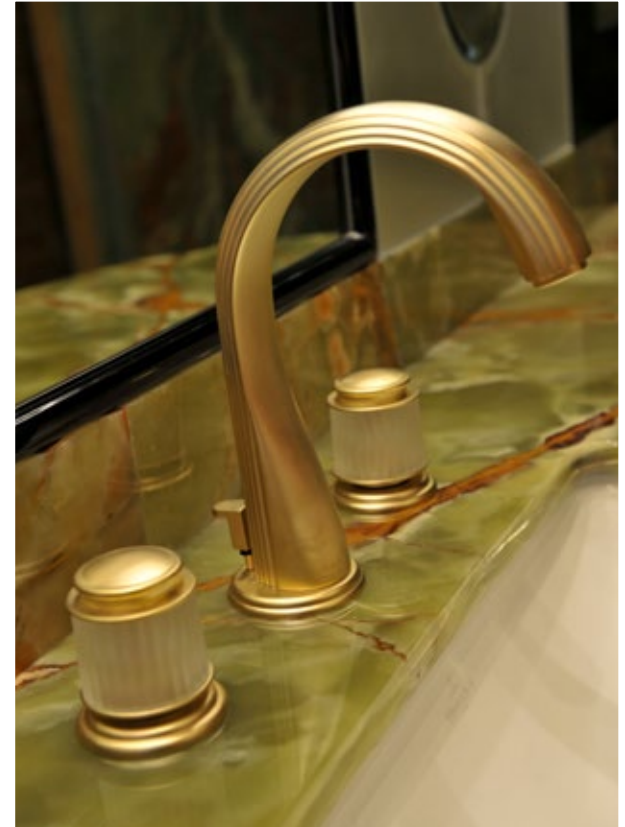


amer 94
www.ameryachts.com



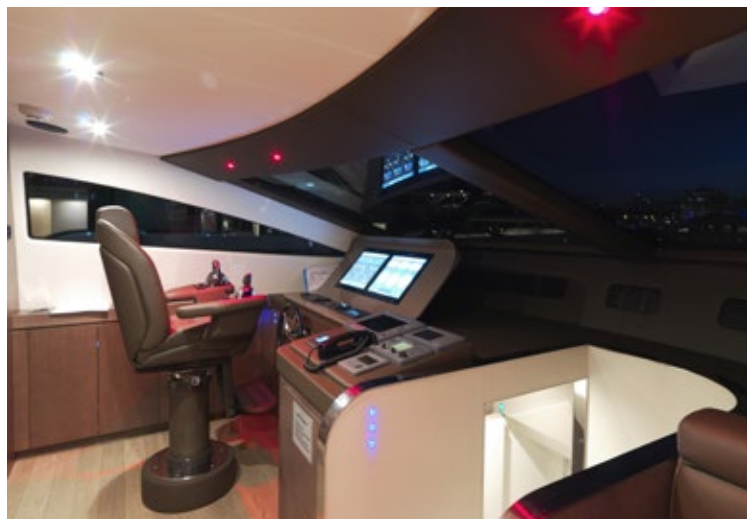
amer 94
www.ameryachts.com

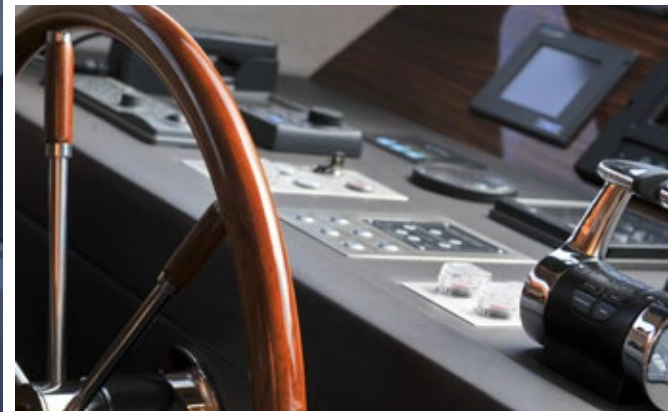




amer 94
www.ameryachts.com







amer 94
www.ameryachts.com



amer 94
www.ameryachts.com

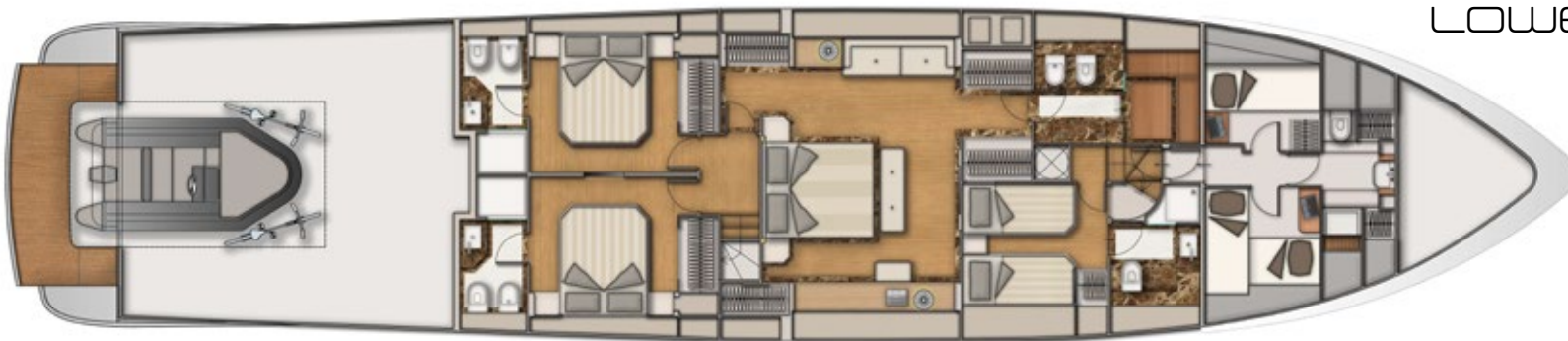




FLY DECK



MAIN DECK



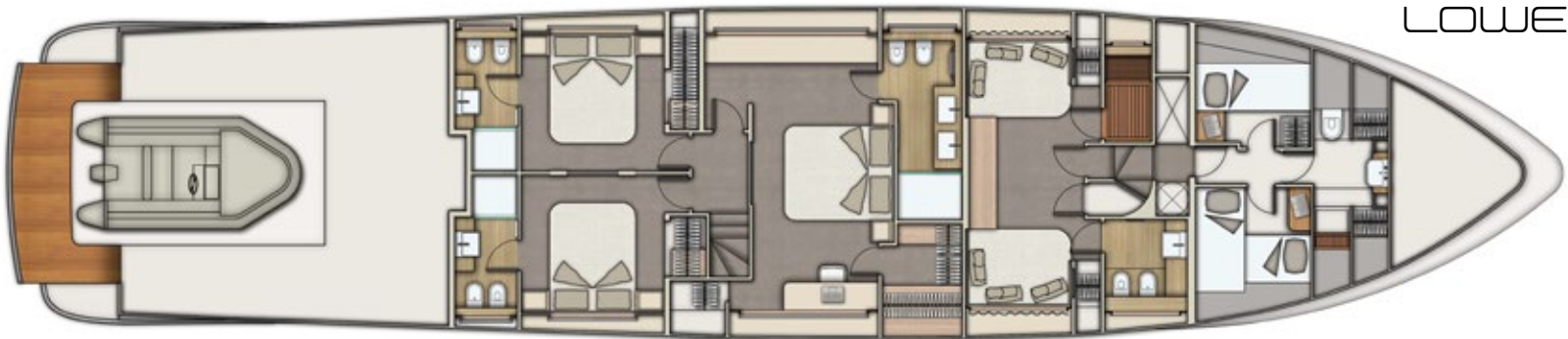
LOWER DECK



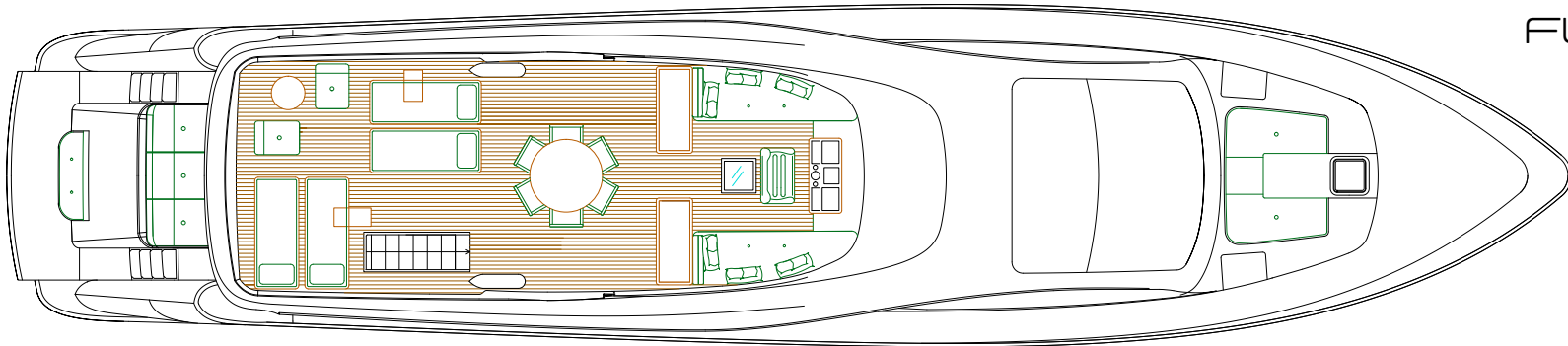
FLY DECK



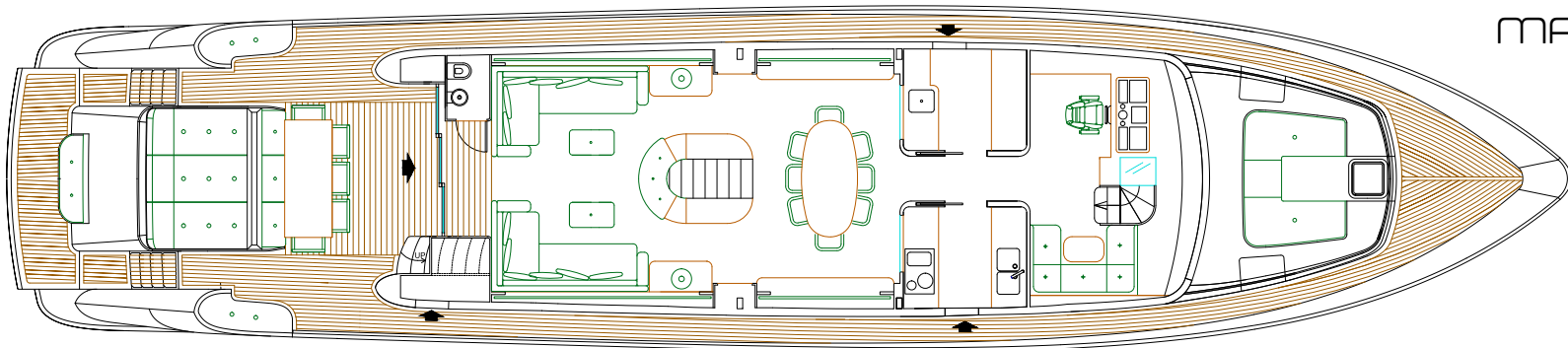
MAIN DECK



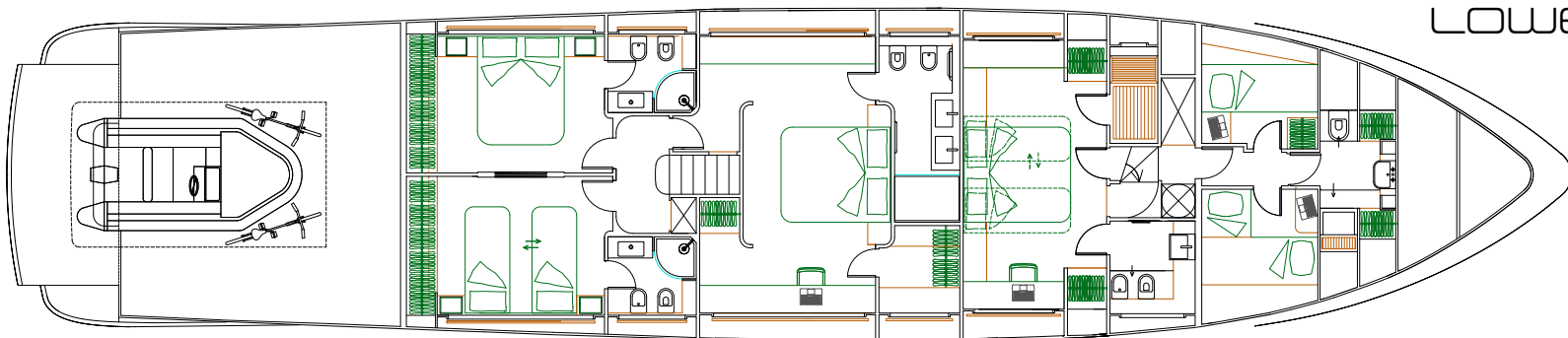
LOWER DECK



FLY DECK



MAIN DECK



LOWER DECK

amer 94

<u>LOA</u> <u>Lunghezza scafo</u> <u>Larghezza</u>	28,65 m 23,96 m 6,30 m		<u>LOA</u> <u>Length hull</u> <u>Beam</u>
<u>Immersione massima</u> <u>a pieno carico</u>	1,67 m	1,85 m	<u>Maximum draft</u> <u>fully loaded</u>
<u>Dislocamento</u>	59 Tons	64 Tons	<u>Displacement</u>
<u>Materiale</u>	VTR		<u>Material</u>
<u>Motorizzazione</u>	2 VOLVO PENTA IPS 1350	3 VOLVO PENTA IPS 1200	<u>Propulsion</u>
<u>Combustibile</u> <u>Acqua dolce</u>	5.000 l 1.500 l	7.000 l 1.800 l	<u>Fuel tank</u> <u>Water tank</u>
<u>Velocità di crociera</u> <u>Velocità massima</u>	24 / 26	26 / 30	<u>Cruising speed</u> <u>Top speed</u>

www.ameryachts.com